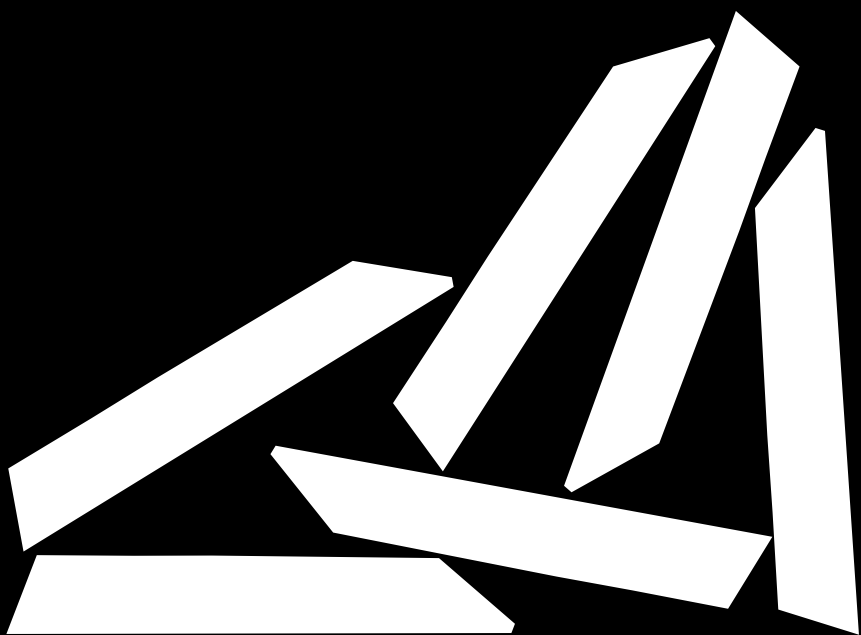


42



**Through  
meaningful  
design, our  
architecture  
enhances lives,  
settings and  
experiences.**

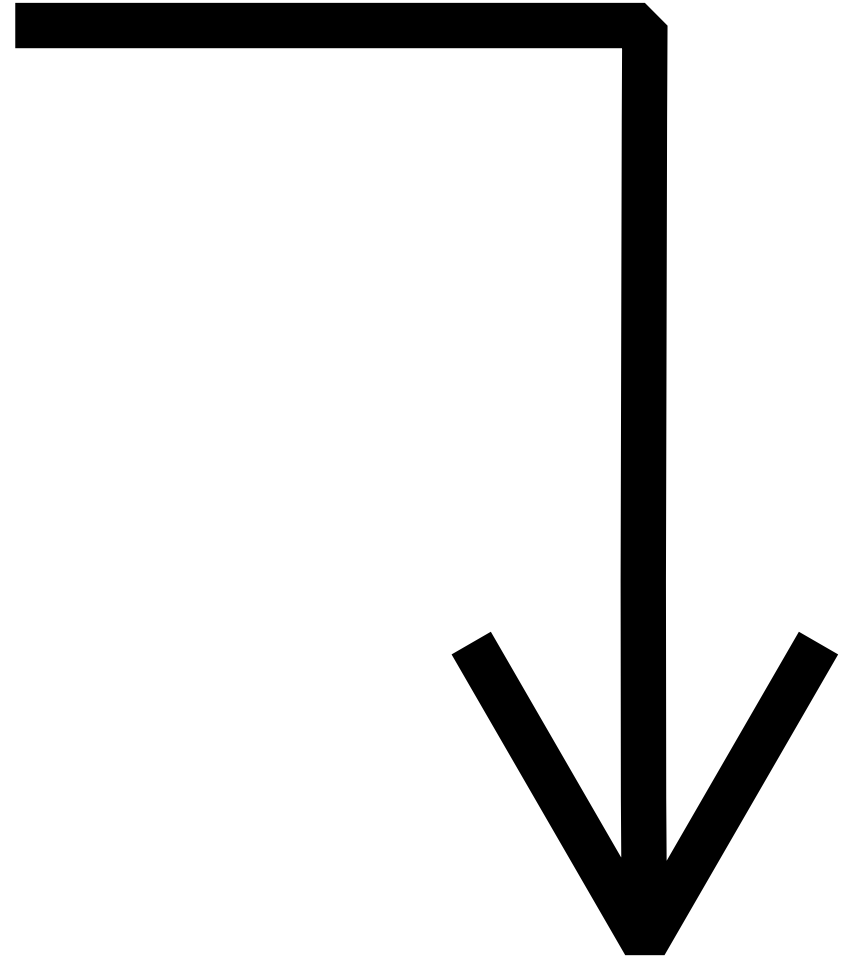


Adaptable+  
Accepted

A2  
Architecture

About  
Us

**A2 are a  
collective of  
designers and  
disciplines,  
driven by  
innovation and  
imagination.**



Able+  
Adaptable

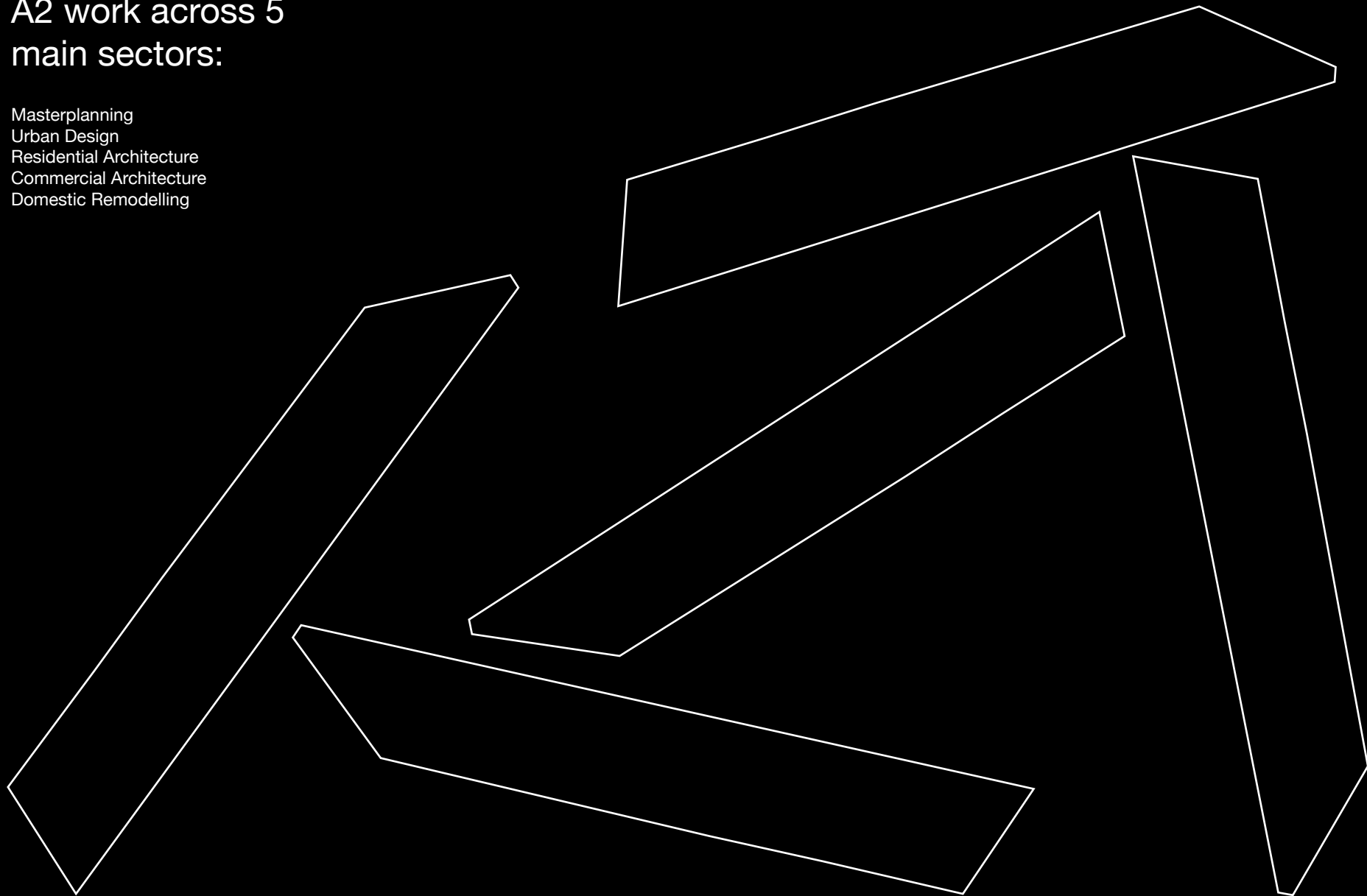
Ambitious+  
Adept

Analytical+  
Applied

We develop our work through  
constant dialogue within the studio,  
with our collaborators and with future  
users of our designs.

# A2 work across 5 main sectors:

Masterplanning  
Urban Design  
Residential Architecture  
Commercial Architecture  
Domestic Remodelling



# Deliver the unexpected.

ZINC HOUSE

Zinc  
House

Residential  
Dwelling

Solihull  
2019

Be

Bold

Studio  
Ethos

Brave  
Original  
Liveable  
Dynamic

# B



**Bold.**

We innovate, we challenge convention, we change perceptions and push boundaries to deliver buildings that are stimulating, coherent and engaging.

Brave

Balanced

Broad

~~Constrained~~




# A2 create exemplary schemes that work at every scale.



We are guided by a singular purpose:  
to create places and spaces that  
are functional, contextual and  
sustainable. In essence, architecture  
of true and lasting value.





# There are no disciplines without understanding.

Chessetts  
Manor

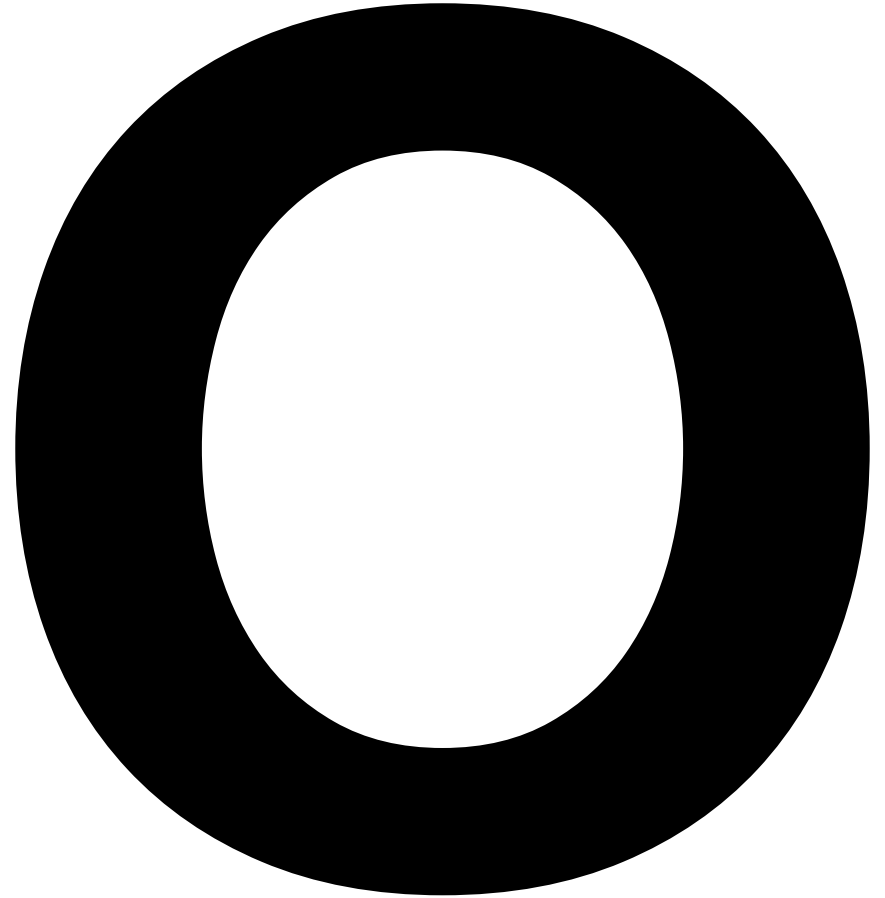
Residential  
Dwelling

Solihull  
2019

CHESETTS MANOR.

## Optimistic.

We see change as opportunity. We design with positive, open minds which makes us more receptive to seeing and doing things differently.



Original

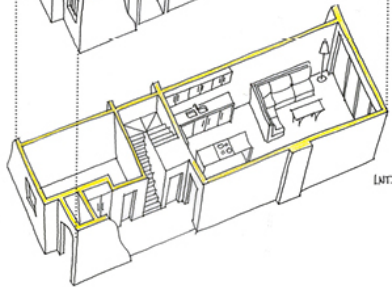
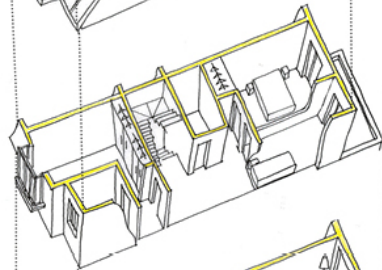
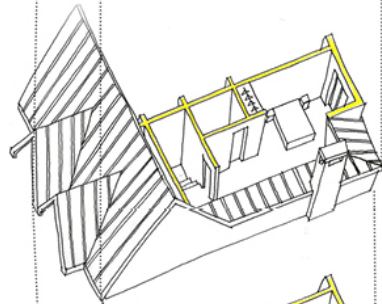
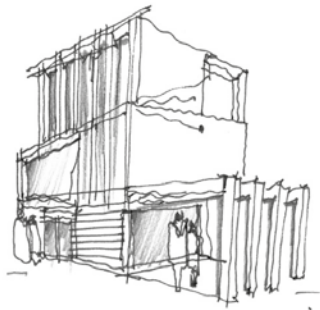
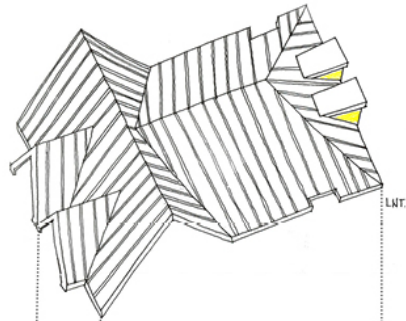
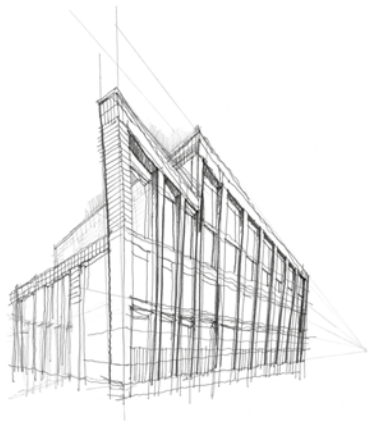
Observant

Organised



~~Convention~~





When we search for appropriate solutions for a given locality; we start by putting pen to paper and strive for a proposition that can both satisfy its direct user and synchronise with its surroundings.





# There is no design without discipline.

DEPOT

The  
Depot

Residential  
Dwelling

Hampton-In-Arden  
2019



## Liveable.

We creatively engage with clients to bring projects to life with ingenuity and inspired design to meet the needs of people today and tomorrow.

| Longevity

| Logical

| Leading

**~~Temporary~~**



# Design for living.



We are a passionate collective of ambitious Architects and Urban Designers collaborating with an aligned ethos to create exemplary schemes of bold contemporary architecture; regardless of scale or budget.



# Our impact is measurable.

Box  
House

Residential  
Dwelling

Esher  
2019

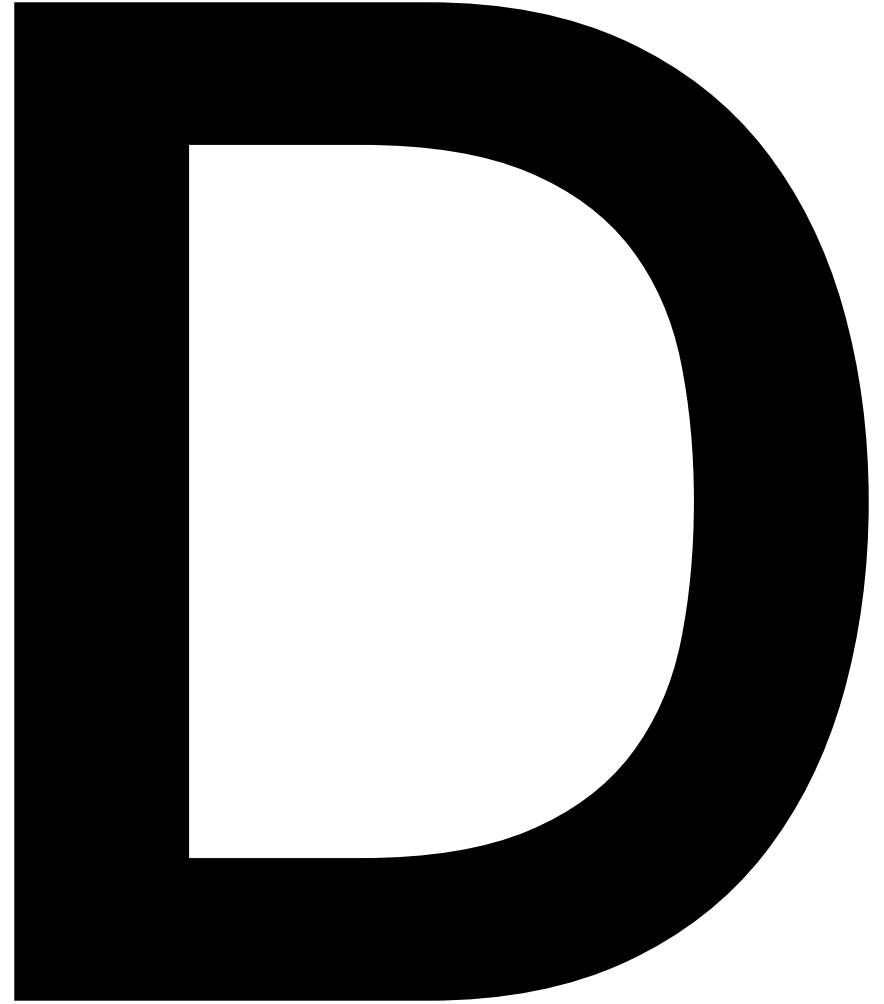
## Dynamic.

We build dynamic relationships that endure.  
We place clients at the heart of the process so they can share in the plans and we can refine our vision.

Decisive

Dependable

Different



~~Restricted~~



# Quality is our standard.

No two projects are ever alike.  
We learn, we discover and then  
we use this knowledge to improve  
and perfect everything we do.



# Live by design.



Water  
Gardens

Residential  
Dwelling

Henley-In-Arden  
2017

# Get in touch to discuss an upcoming project.

[www.a2architecture.co.uk](http://www.a2architecture.co.uk)

Social  
@a2architecture

Phone  
0121 775 0180

Email  
[info@a2architecture.co.uk](mailto:info@a2architecture.co.uk)